

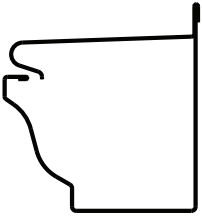
LEAFWAY® K-Style Seamless Gutter & Cover Machine



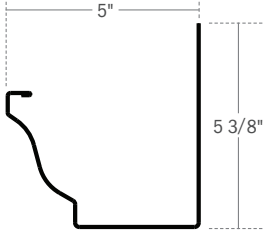
Maximize your time with our three-in-one gutter machine by producing the gutter, the cover or both the gutter and cover in one run, all without any conversions to the machine.

Colors can also be tailored to the building's existing color palette with just a simple switch of the coil.

PROFILES



Gutter and Cover (Leafaway)

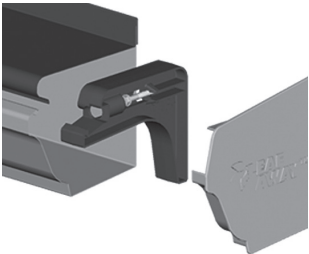


Gutter (K-style)



Cover (Leafaway)

LEAFWAY FEATURE



Leafaway features a specially designed Sur-lock™ internal brackets to secure the system to the fascia board and allow you to lift up the cover to gain entrance into the gutter.

STANDARD PACKAGE

- 1 Leafaway 5" K-style Gutter Machine
- 1 15" Miter Saw
- 3 Spools
- 3 Run-Out Stands
- 1 Owner's Manual

FEATURES

- Heavy-duty steel frame for structural stability and forming consistency
- Variable speed frequency drive
- Patent pending design
- Extendable cutting table
- Industrial hard-chrome-plated rollers

INCLUDES

- Operational training and technical support
- 2-year warranty

SPECIFICATIONS

DIMENSIONS	
WIDTH	22"
LENGTH.....	216"
HEIGHT	45"
WEIGHT	2,985 lbs
COIL WIDTH (GUTTER)	
K-STYLE	11 3/4" – 12"
LEAFWAY	13 1/4"
COIL WIDTH (COVER)	
LEAFWAY	7 3/8"
MATERIAL	
ALUMINUM	0.032
POWER	2HP electric, 110V
SPEED	Variable 35 – 45 ft/min
FORMING STATIONS	18

GET MORE INFO



info@eastsidemachine.com
 toll-free (800) 234-7834
 www.eastsidemachine.com

(701) 237-5952 | fax (701) 232-6666
 474 45th St S, Fargo, ND 58103
 PO Box 2426, Fargo, ND 58108-2426

LEAFWAY® K-Style Seamless Gutter & Cover Machine

TRAILER 30' TANDEM AXLE 5TH WHEEL



Also includes an 8 ft fluorescent interior light with one switch, two 110V interior receptacles, one 110V 60A panel with lifeline and an 18 ft roof rack and roof hoist (16 ft in length I-beam, center down ceiling).

SPECIFICATIONS

DIMENSIONS

LENGTH..... 22'
 HEIGHT..... 8'
 INTERIOR HEIGHT..... 6' 10"
EXTERIOR. 0.040 white aluminum

FEATURES

- Tandem 7,000# torsion axles (14,000# GVWR) 8-bolt hubs, LT235/85R16E tires
- All-wheel electric brakes and breakaway kit
- 16" on-center construction, 2" high x 6" wide box frame
- Front jacks, ladder rack and catwalk
- Aluminum tread plate front stone guard
- 30" entrance door with camlock
- 3/4" solid-core plywood floor
- 3/8" plywood lined walls
- Insulated walls and ceiling
- White vinyl ceiling liner
- Double rear swing-out cargo doors

GET MORE INFO



info@eastsidemachine.com
 toll-free (800) 234-7834
www.eastsidemachine.com

(701) 237-5952 | fax (701) 232-6666
 474 45th St S, Fargo, ND 58103
 PO Box 2426, Fargo, ND 58108-2426