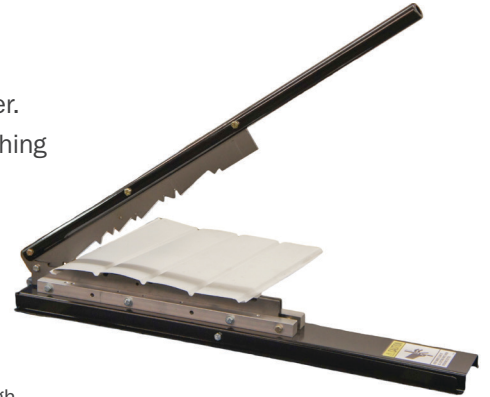


16" ALUMINUM SOFFIT CUTTER

The following information will allow you to operate, maintain, and service your cutter. This document should be retained for reference when ordering service parts, switching to other profiles, or maintaining and adjusting the cutter.



CUTTING SIMILAR LENGTH PIECES WITH THE CUTTER STOP:

- Using a 1/2" wrench, locate and remove the 5/16" x 1/2" bolt holding the stored cutter top on the side of the cutter.
- Locate the 1/8" x 1-1/16" rectangular cutouts on each side of the base. Slide the cutter stop through these slots. The "L" of the stop should be upward when installed into the base.
- Use the 5/16" x 2" bolt located in the soffit block directly above the rectangular slot opposite the soffit guide. Thread into the hole so it just begins to contact the cutter stop.
- Determine the length of the panels to be cut by measuring from the leading shear edge of the blade to the leading edge of the "L" of the cutter stop. Now you can gently snug up the 5/16" x 2" bolt to keep the cutter stop in place.
- When finished cutting your pieces to length, return and secure the cutter stop to the base for future use.

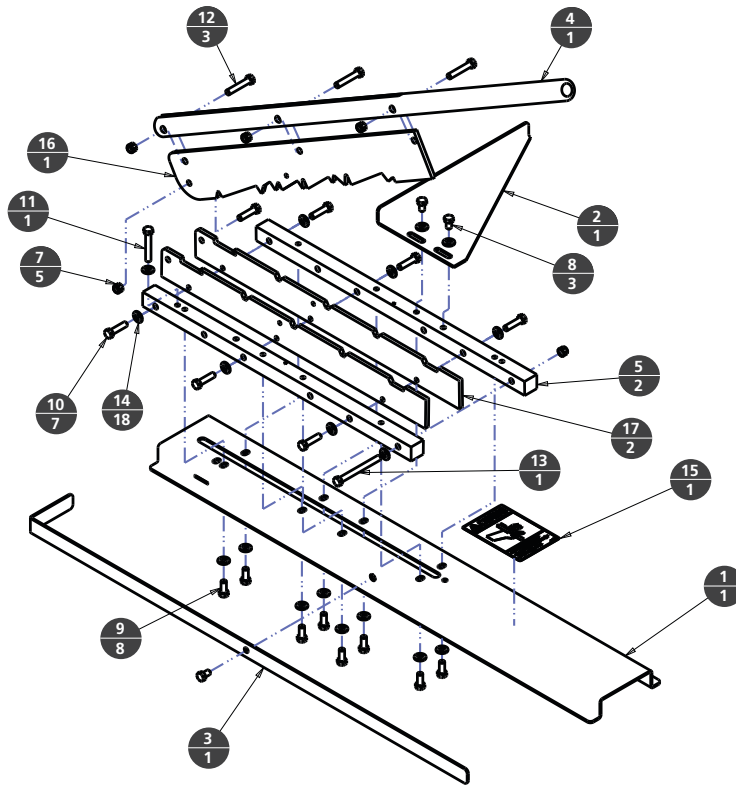
REPLACING THE DIES:

- Remove the 5/16" x 1-1/4" blade pivot bolt, 5/16" nylock nut, and handle/blade assembly from the cutter.
- Remove the eight 5/16" x 1-1/4" bolts from the soffit blocks used to secure the dies on each side of the cutter. Remove and replace the soffit dies, then reassemble with the 5/16" x 1-1/4" bolts.
- Reassemble the handle/blade assembly with the 5/16" x 1-1/4" pivot bolt and 5/16" nylock nut.
- If the soffit blade binds with the dies or a gap greater than .003" exists on each side of the blade, the cutter will not perform as intended. Use the following procedure to make adjustments necessary to correct the clearance:
 - Locate the eight 5/16" x 3/4" bolts on the underside of the cutter. Loosen these bolts about 2-3 turns; do not remove.
 - Using a .003" feeler gauge placed between the blade and die, reposition the dies to maintain this clearance while tightening the bolts on the underside of the cutter. Each side will need to be done separately.
 - Recheck clearance before using.
 - Failure to recheck the clearance may result in damage to the blade and dies.

IMPORTANT:

- Use caution when operating this cutter. Keep hands clear. Do not allow children to operate the cutter. Never operate the cutter when under the influence of medication, alcohol, drugs, or any mind-altering substances.
- Oil the cutter frequently. This will improve cutter performance and prolong the life of the blade and dies.
- Improper blade and die adjustments will void the warranty.

16" ALUMINUM SOFFIT CUTTER (Continued)



ITEM	P/N	DESCRIPTION	QTY
1	305065	Base	1
2	305066	Guide	1
3	305067	Stop Plate	1
4	307052	Handle Tube	1
5	310009	Block	2
6	319001	Information Sheet	1
7	910302	5/16 in. Nylon-insert Zinc-plated Lock Nut	5
8	911299	5/16 in. x 1/2 in. Hex Head Zinc-plated Grade 5 Cap Screw	3
9	911300	5/16 in. x 3/4 in. Hex Head Zinc-plated Grade 5 Cap Screw	8
10	911302	5/16 in. x 1-1/4 in. Hex Head Zinc-plated Grade 5 Cap Screw	7
11	911305	5/16 in. x 2 in. Full-Thread Hex Head Zinc-plated Grade 5 Cap Screw	1
12	911315	5/16 in. x 1-3/4 in. Hex Head Grade 8 Zinc-plated Cap Screw	3
13	911325	5/16 in. x 3-1/4 in. Hex Head Grade 8 Zinc-plated Cap Screw	1
14	914300	5/16 in. SAE Washer	18
15	919016	Caution Decal	1
16	990019	Blade	1
17	990020	Die	2