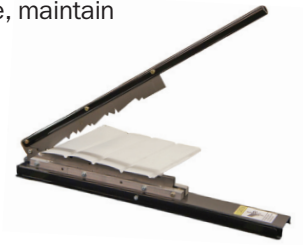


UNIVERSAL SOFFIT CUTTER

Thank you for purchasing the Universal Soffit Cutter. The following information will allow you to operate, maintain and service your cutter. This document should be retained for reference when ordering service parts, maintaining, adjusting or switching the cutter for other profiles.



Using the cutter stop to aid in cutting similar length pieces:

- Using a 1/2" wrench, locate and remove the 5/16" x 1/2" bolt holding the stored cutter top on the side of the cutter.
- Locate the 1/8" x 1-1/16" rectangular cutouts on each side of the base. Slide the cutter stop through these slots. The "L" of the stop should be upward when installed into the base.
- Use the 5/16" x 2" bolt located in soffit block directly above the rectangular slot opposite the soffit guide. Thread into the hole so it just begins to contact the cutter stop.
- Determine the length of the panels to be cut by measuring from the leading shear edge of the blade to the leading edge of the "L" of the cutter stop. Now you can gently snug up the 5/16" x 2" bolt to keep the cutter stop in place.
- When finished cutting your pieces to length, return and secure the cutter stop to the base for future use.

Replacing the dies:

- Remove the 5/16" x 1-1/4" blade pivot bolt, 5/16" nylock nut and handle/blade assembly from the cutter.
- Remove eight 5/16" x 1-1/4" bolts from the soffit blocks used to secure the dies on each side of the cutter. Remove and replace the soffit dies, then reassemble with the 5/16" x 1-1/4" bolts.
- Reassemble the handle/blade assembly with the 5/16" x 1-1/4" pivot bolt and nylock nut.
- If soffit blade binds with the dies or a gap greater than .003" exists on each side of the blade, the cutter will not perform as intended. The following procedure is used to make adjustments necessary to correct the clearance:
 - Locate eight 5/16" x 3/4" bolts on the underside of the cutter. Loosen these bolts about 2-3 turns, do not remove.
 - Using a .003" feeler gauge placed between the blade and die, reposition the dies to maintain this clearance while tightening the bolts on the underside of the cutter. Each side will need to be done separately.
 - Recheck clearance before using.
 - Failure to recheck the clearance may result in damage to the blade and dies.

IMPORTANT!

- Use caution when operating this cutter. Keep hands clear. Do not allow children to operate the cutter. Never operate the cutter when under the influence of medication, alcohol, drugs or any mind altering substance.
- Oil cutter frequently. This will improve cutter performance and prolong the life of the blade and dies.
- Improper blade and die adjustments will void the warranty.

View the Parts Diagram on the next page. →

GET MORE INFO

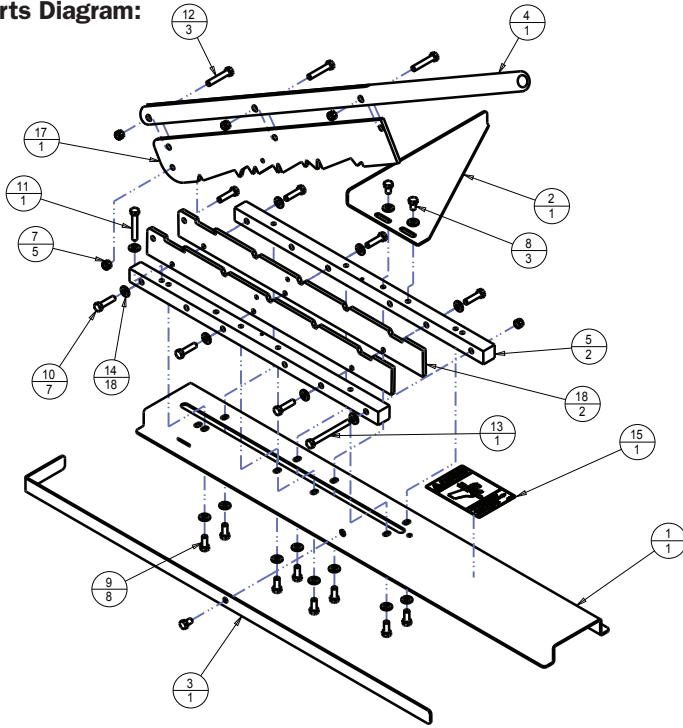


info@eastsidemachine.com
TOLL-FREE (800) 234-7834
www.eastsidemachine.com

(701) 237-5952 | FAX (701) 232-6666
845 34th St N, Fargo, ND 58102
PO Box 2426, Fargo, ND 58108-2426

UNIVERSAL SOFFIT CUTTER

Parts Diagram:



ITEM	P/N	DESCRIPTION	QTY
1	305065	BASE, UNIV. SOFFIT CUTTER	1
2	305066	GUIDE, SOFFIT CUTTER	1
3	305067	PLATE, SOFFIT CUTTER STOP	1
4	307052	TUBE, UNIVERSAL SOFFIT CUTTER HANDLE	1
5	310009	BLOCK, UNIVERSAL CUTTER SOFFIT	2
6	319001	SHEET, UNIVERSAL SOFFIT CUTTER INFORMATION	1
7	910302	NUT, 5/16 NYLON-INSERT LOCK NUT ZINC PLATED	5
8	911299	SCREW, 5/16 X 1/2 HEX HEAD ZINC PLATED GRADE 5 CAP	3
9	911300	SCREW, 5/16 X 3/4 HEX HEAD ZINC PLATED GRADE 5 CAP	8
10	911302	SCREW, 5/16 X 1-1/4 HEX HEAD ZINC PLATED GRADE 5 CAP	7
11	911305	SCREW, 5/16 X 2 FULL THREAD HEX HEAD ZINC PLATED GRADE 5 CAP	1
12	911315	SCREW, 5/16 X 1-3/4 HEX HEAD GRADE 8 ZINC PLATED CAP	3
13	911325	SCREW, 5/16 X 3-1/4 HEX HEAD GRADE 8 ZINC PLATED CAP	1
14	914300	WASHER, 5/16 SAE	18
15	919016	DECAL, CAUTION	1
16	930014	BOX, UNIVERSAL CUTTER	1
17	990019	BLADE, UNIVERSAL SOFFIT	1
18	990020	DIE, UNIVERSAL SOFFIT	2

GET MORE INFO



info@eastsidemachine.com
 TOLL-FREE (800) 234-7834
www.eastsidemachine.com

(701) 237-5952 | FAX (701) 232-6666
 845 34th St N, Fargo, ND 58102
 PO Box 2426, Fargo, ND 58108-2426